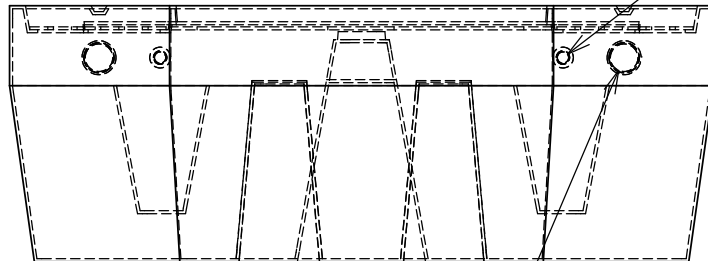


removeable flat lid with 5 slots  
[2]

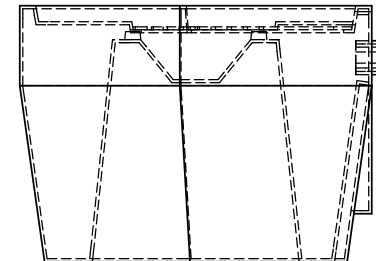
Ø .70 THRU  
1/2 NPT

#53dtb raised double end spinweld  
[2]



Ø 1.72 THRU  
1-1/2 NPT

#56dtb raised double end spinweld  
[2]



PROPRIETARY AND CONFIDENTIAL  
THE INFORMATION CONTAINED IN THIS  
DRAWING IS THE SOLE PROPERTY OF  
SELJAN CO.. ANY REPRODUCTION  
IN PART OR AS A WHOLE WITHOUT THE  
WRITTEN PERMISSION OF SELJAN CO. IS  
PROHIBITED.

DRAWN: JJS

Monday, December 19, 2011 11:55:08 AM

MATERIAL:

X

DO NOT SCALE DRAWING.  
DIMENSIONS ARE IN INCHES.  
TOLERANCES UNLESS SPECIFIED:  
TWO PLACE DECIMAL: ±0.010 PER 1"  
THREE PLACE DECIMAL: ±0.01"  
ANGULAR: ±1°  
CORNER RADIUS: 0.25" ±0.13"  
FLATNESS: ±0.020" PER 1"  
LINEAR TOL.: ±0.010" PER 1"

Blue Thumb

half moon basin  
B9430-00-159

| SIZE           | PART NO.                   | REV.         |
|----------------|----------------------------|--------------|
| A              | B-9870-rev2                | .            |
| SCALE:<br>1:12 | ENGINEERING APPROVAL:<br>X | SHEET 1 OF 1 |